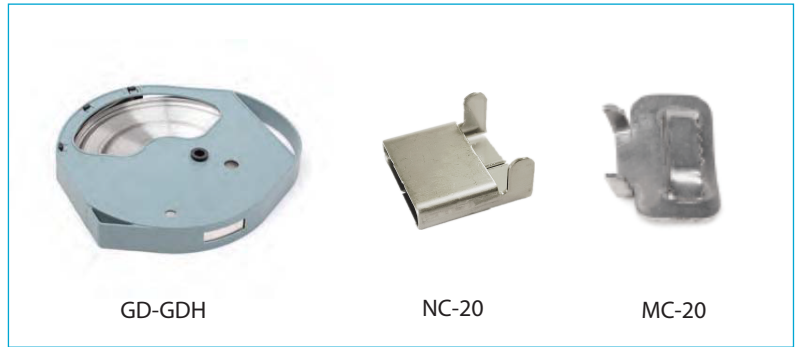


GD, NC & W001, STAINLESS STEEL STRAP AND ACCESSORIES

Stainless steel straps are designed to attach cable protection, anchoring and suspension assemblies and other devices on poles. Straps and buckles are made of 304 stainless steel.

Installation

- Cut the strap into required length.
- Insert steel strap through buckle NC-20.
- Use Melec binding tool to fix the strap.



GD-GDH

NC-20

MC-20



W001

Type	Thickness x Width(mm)	Length/Roll(m)	Pack (pcs)
GD-0.4x20-GDH	0.4x20	50	5
GD-0.7x20-GDH	0.7x20	50	5

Type	Description	Pack (pcs)
NC-20	Buckles for Straps	300x4
MC-20	Buckles for Straps	200x4
W001	Binding tool	2x4